

P30

[1.1] 220°

[1.2] -45

[1.3] 240°

P31

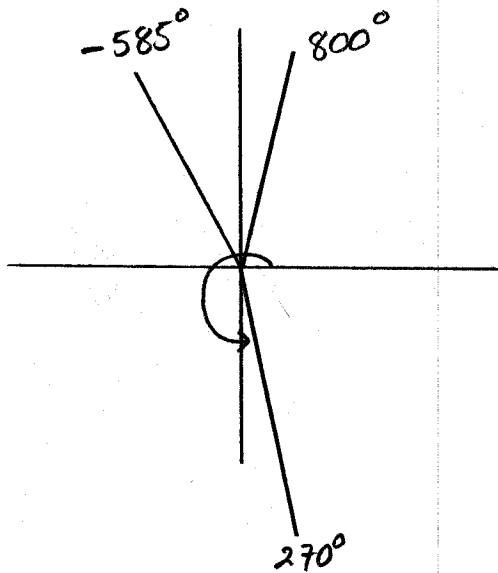
[2.1] 8 PM - 10 AM is 14 HRS

minute hand $14 \cdot 360^\circ = 5040^\circ$

Hour hand $360^\circ + \frac{2}{12}(360) = 420^\circ$

[3] $-\beta$

[4]



P32

[5.1] $30^\circ + 360n, n \in \mathbb{Z}$

[5.2] $180^\circ + 360n, n \in \mathbb{Z}$

[5.3] $315 + 360n, n \in \mathbb{Z}$

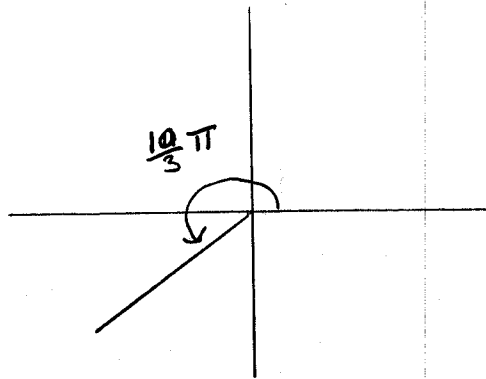
P.33

[6] $30^\circ = \frac{\pi}{6}, 45^\circ = \frac{\pi}{4}, 150^\circ = \frac{5\pi}{6}, 360^\circ = 2\pi$

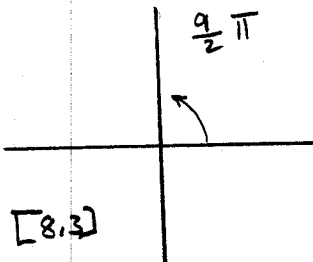
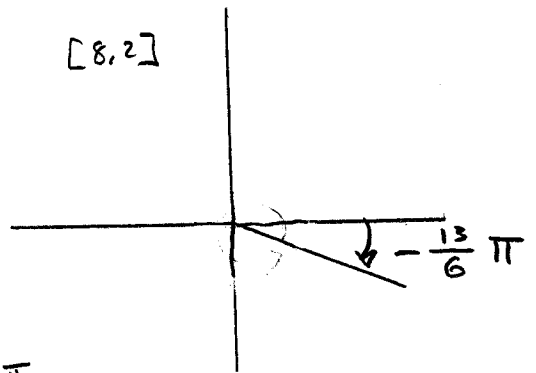
[7] $\frac{\pi}{5} = 36^\circ, \frac{2}{3}\pi = 120^\circ, \frac{3}{2}\pi = 270^\circ, 3\pi = 540^\circ$

P 33, ctd

[8.1]



[8.2]



[8.3]

[9.1] $\frac{\pi}{3} + 2n\pi, n \in \mathbb{Z}$

[9.2] $-\frac{3\pi}{4} + 2n\pi, n \in \mathbb{Z}$

[9.3] $3\pi + 2n\pi, n \in \mathbb{Z}$ OR